

MARKING TAGS

The cost effective MT marking system provides quick and accurate identification. MT Push-On Marking Tags fit all Altech DIN Rail mount and panel mount terminal blocks. They can be inserted individually or as strips of 10 tags on terminal block assemblies for quick and easy marking.

MT Marking Tags are supplied blank for custom marking or they can be ordered with a horizontal or vertical imprint. The standard tag color is white with black imprint. Tags can be ordered with up to 3 characters each. Imprints can be either consecutive or identical characters. MT tags, catalog numbers MT2-MT8 are supplied in packs of identical strips, 10 tags per strip.

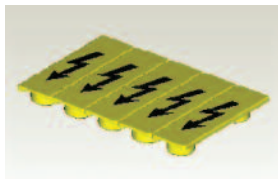
Catalog numbers MT10-MT15 are supplied in packs of identical strips, 5 tags per strip.

Group marker MTG1 is used for group identification and can be fixed on the end stop CA702.

When ordering specify strip marking as a suffix; i.e. MT2/H-1-10.

WARNING LABELS

These 5 position warning labels can be mounted on top of 8 mm Terminal Blocks. Besides giving visual identification, it also makes an entire DIN Rail Terminal Block assembly completely shock proof. SWL6 warning labels are suitable for CTS6, CMDB6 and CDB6 series Terminal Blocks.



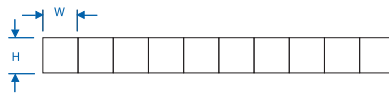
Material	Polyamide
Dimensions H x L x W	4 x 39.5 x 27 mm
Cat. No.	SWL6
Std. Pk	50



Group Marker, shown imprinted and attached to CA 702. Blank and custom printing available. Cat. No. MTG1

Tags

Blank



Horizontal Tags

Consecutive Digits (Specify decade)
Nos. 1-10, 11-20, etc. up to 100 *
Nos. 101-110, etc. up to 999 *



Identical Characters (Specify digits, characters)
Nos. 1, 2, 3 etc. up to 999 *
Characters A, B, up to Z,
Symbols +, -, ⊕ *



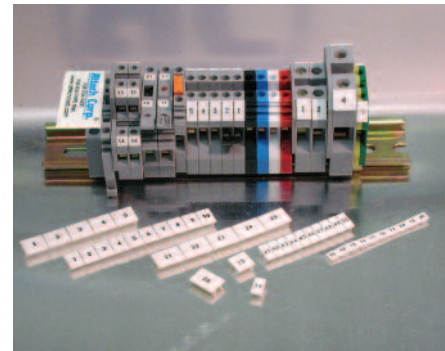
Vertical Tags

Consecutive Digits (Specify decade)
Nos. 1-10, 11-20, etc. up to 100
Nos. 101-110, etc. up to 999

Identical Characters (Specify digits, characters)
Nos. 1, 2, 3 etc. up to 999
Characters A, B, up to Z,
Symbols +, -, ⊕



MT MARKING TAGS



Cat. No.	Std. Pk.		Dimensions	
	Strips	Tags	H	W
MT2	10	100	4.9	5.8
MT3	20	100	5.0	10.0
MT4	10	100	5.0	4.8
MT5	10	100	9.4	4.5
MT6	10	100	9.4	5.5
MT8	10	100	10.4	7.3
MT9	10	100	10.3	8.7
MT9F	10	10	10.3	90.0
MT10	20	100	10.4	9.4
MT12	20	100	10.4	11.3
MT15	20	100	10.4	14.3
MT20	100	100	4.9	20
MT25	100	100	4.9	25

Cat. No.	Std. Pk.		Dimensions	
	Strips	Tags	H	W
MT2/H	10	100	4.9	5.8
MT3/H	20	100	5.0	10.0
MT4/H	10	100	5.0	4.8
MT5/H	10	100	9.4	4.5
MT6/H	10	100	9.4	5.5
MT8/H	10	100	10.4	7.3
MT9/H	10	100	10.3	8.7
MT9F/H	10	100	10.3	90.0
MT10/H	20	100	10.4	9.4
MT12/H	20	100	10.4	11.3
MT15/H	20	100	10.4	14.3
MT20/H	100	100	4.9	20
MT25/H	100	100	4.9	25

Cat. No.	Std. Pk.		Dimensions	
	Strips	Tags	H	W
MT2/V	10	100	4.9	5.8
MT3/V	20	100	5.0	10.0
MT4/V	10	100	5.0	4.8
MT5/V	10	100	9.4	4.5
MT6/V	10	100	9.4	5.5
MT8/V	10	100	10.4	7.3
MT9/V	10	100	10.3	8.7
MT9F/V	10	100	10.3	90.0
MT10/V	20	100	10.4	9.4
MT12/V	20	100	10.4	11.3
MT15/V	20	100	10.4	14.3
MT20/V	100	100	4.9	20
MT25/V	100	100	4.9	25